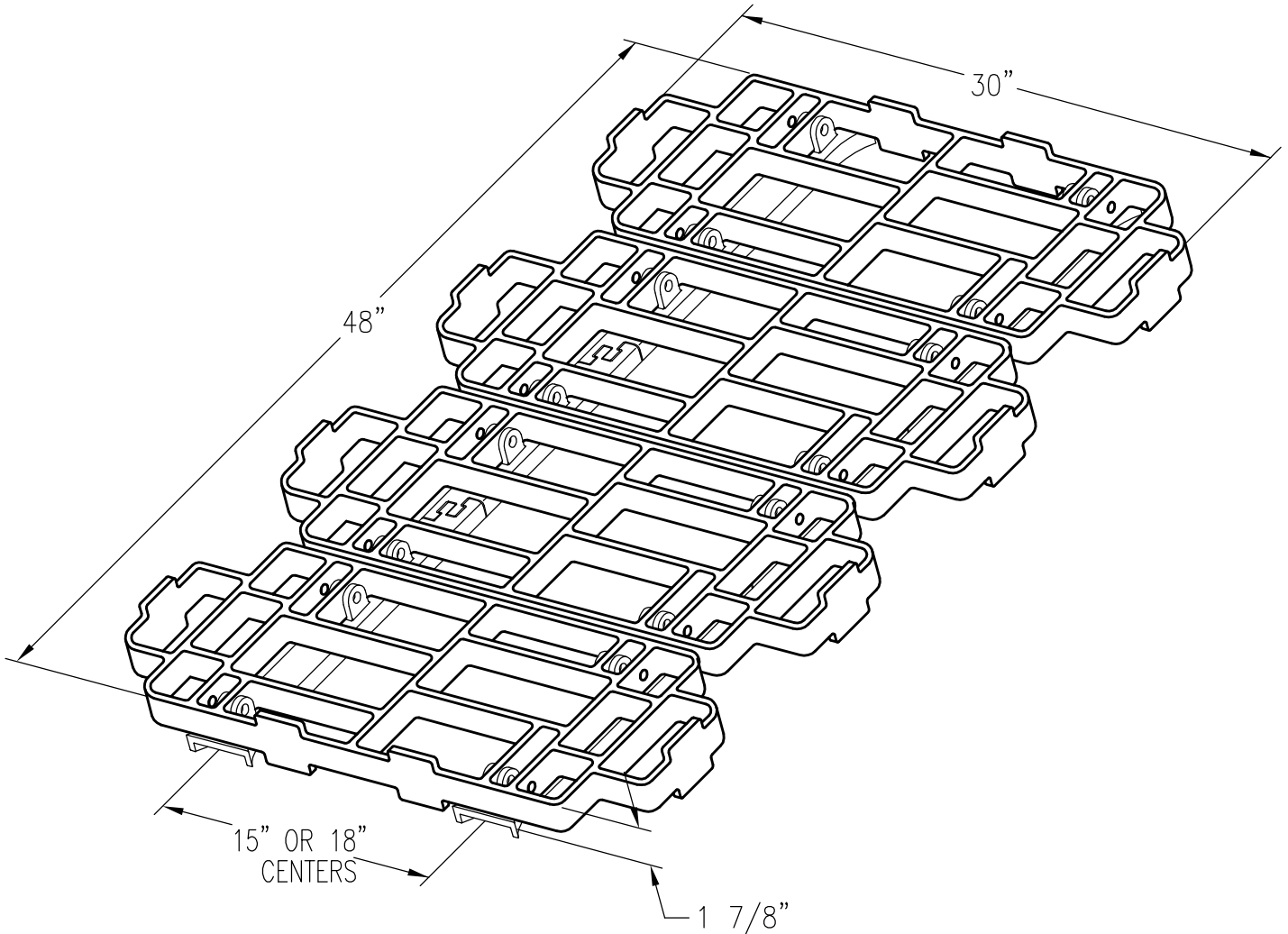


30" X 48" GVRT TRAY ASSEMBLY



ASSEMBLY CONSISTS OF:

QTY	DESCRIPTION	PART NO:	DWG. NO:
4	1.5" X 11.625" X 30" TRAY	CC-2003	CA-2009-C
4	1.375" END SHOE	CC-9000	CA-2010-C
2	1.375" EXTENSION SHOE	CC-9001	CA-2010-C
16	SHOE PIN	C334	---
32	RETAINING WASHER	CC-102	SK-009-A
32	COTTER PIN	C121	---

OPTIONAL:

QTY	DESCRIPTION	PART NO:	DWG. NO:
4	2" END SHOE	CC-9002	CA-2010-C
2	2" EXTENSION SHOE	CC-9003	CA-2010-C